



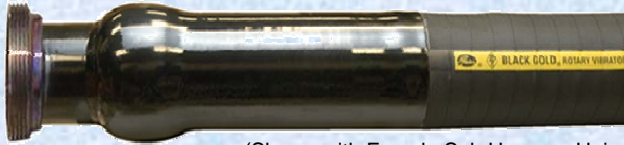
OFFSHORE



LAND RIG

Gates Black Gold[®] Cementing Hose

10,000 psi W.P. - 15,000 psi Test



(Shown with Female Sub Hammer Union)

Certification/Standards

ABS (Additional Cost)
Coupling/Mat'l Traceability (Additional Cost)
DIN German (Additional Cost)
DNV (Additional Cost)
Health & Safety Executive (Additional Cost)
Letter of Conformance (Additional Cost)
Test Certificates

Specification 4773LE

RECOMMENDED FOR: Used as a flexible connection between the cementing pump manifold and cementing head for conveyance of cement slurries at high pressure.

TEMPERATURE: -40°F to +200°F (-40°C to +93°C).

TUBE: Type V (Fluoroelastomer). Black. Excellent resistance to abrasion, corrosion, oil, weather.

REINFORCEMENT: Multiple layers of "close wound", high tensile plated steel cables with one layer of adhesion fabric placed between cable layers. Multiple layers of reinforcement under cover.

COVER: Type C₄ (Modified Nitrile). Black. Specially compounded UltraBration cover is resistant to abrasion, corrosion, cutting, gouging, oil and weather. One continuous longitudinal yellow transfer label. Serial number and manufacture date embossed.

COUPLINGS: Swaged – Couplings can be supplied with your choice of end fittings, (see "Most Commonly used Welded-On Fittings" section for more detailed information). **NOTE:** FIELD WELDING OF FITTINGS TO COUPLING IS **NOT** RECOMMENDED.

FITTINGS: Hammer Unions

Hubs

Flanges



Female Sub Male Sub./Nut



AVAILABLE SIZES:

Available Sizes (Inches)	2-1/2	3	3-1/2	Spec.
Nom. O.D.	5.14	5.64	6.05	4773LE
Min. Bend Radius (Inches)	48	48	54	
Wt. per Ft. of hose (Lbs)	20.6	23.0	24.6	
Coupling Wts. Each (Lbs)	62	70	75	
Maximum length of hose (Feet)	90	90	90	

OPTIONAL: Accessories such as SAFETY CLAMPS, HOSE LIFT EYE & COLLAR CLAMP and STAINLESS STEEL ARMOR are found on page 53.