



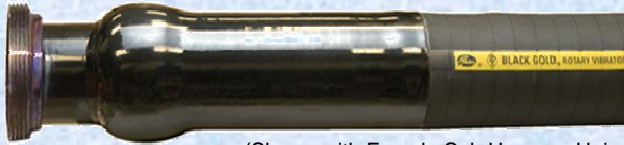
OFFSHORE



LAND RIG

Gates Black Gold® Rotary/Vibrator Drilling Hose

7,500 psi W.P. - 15,000 psi Test API Grade E



(Shown with Female Sub Hammer Union)

Certification/Standards

ABS (Additional Cost)
Coupling/Mat'l Traceability (Additional Cost)
DIN German (Additional Cost)
DNV (Additional Cost)
Health & Safety Executive (Additional Cost)
ISO 6807
Letter of Conformance (Additional Cost)
Test Certificates

Specification 4773 PE

RECOMMENDED FOR: Flexible connection between standpipe and swivel (Rotary Drilling) or between pump and standpipe (Rotary Vibrator) for pumping mud at extra high pressure in oil drilling and exploration work. Meets the high demands of directional drilling and down linking with negative pressure pulses and elevated temperatures.

TEMPERATURE: -40°F to +180°F (-40°C to +82°C).

TUBE: 3/16" thick. Black. Specially compounded for handling abrasive, corrosive and oily drilling mud.

REINFORCEMENT: Multiple layers of polyester cord over tube. Multiple layers of "close wound", high tensile plated steel cables with one layer of adhesion fabric placed between cable layers. Multiple layers of reinforcement under cover.

COVER: Type C₄ (Modified Nitrile). Black. Specially compounded UltraBration cover is resistant to abrasion, corrosion, cutting, gouging, oil and weather. One continuous longitudinal yellow transfer label. Serial number and manufacture date embossed.

COUPLINGS: Swaged – API does not recommend use of pipe threads for working pressures of 5000 psi and above. Couplings can be supplied with your choice of end fitting (see "Most Commonly used Welded-On Fittings" section for more detailed information).

NOTE: FIELD WELDING OF FITTINGS TO COUPLING IS **NOT** RECOMMENDED.

FITTINGS: Hammer Unions

Hubs

Flanges



Female Sub Male Sub./Nut



AVAILABLE SIZES:

Available Sizes (Inches)	2-1/2	3	3-1/2	4	Spec.
Nom. O.D.	5.16	5.66	6.04	6.40	4773PE
Min. Bend Radius (Inches)	48	48	54	60	
Wt. per Ft. of hose (Lbs)	20.2	22.6	24.1	25.8	
Swage Cplg. Wts. Each (Lbs)	62	70	75	90	
Maximum length of hose (Feet)	90	90	90	90	

OPTIONAL: Accessories such as SAFETY CLAMPS, HOSE LIFT EYE & COLLAR CLAMP and STAINLESS STEEL ARMOR are found on page 53.